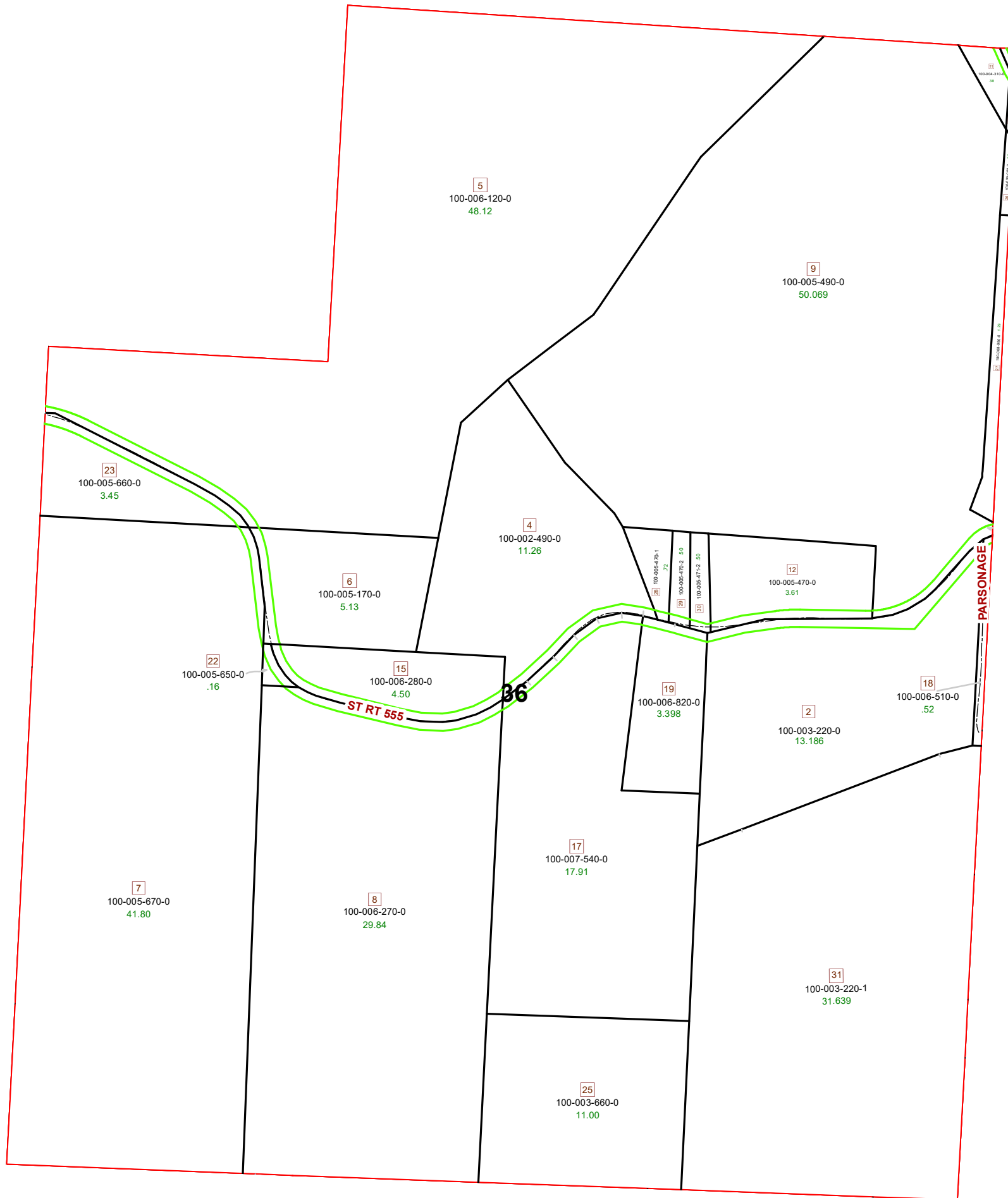
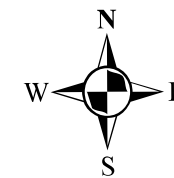


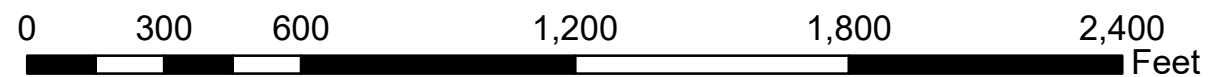
MARION TOWNSHIP FRACTION 36 R12 TWP 8 MORGAN COUNTY, OH



PIN	Owner	VOL	PAGE	LegalDescr	Acres
100-003-220-0	HERSHBERGER AARON N & SARAH W	OR217	2245	R12 T08 S00 FR 36 SD 2 S	13.186
100-003-660-0	JANES CLAUDE A TRUSTEE	OR187	780	R12 T08 S00 FR 36 SD 25	11
100-004-320-0	KING DUANE E	OR200	523	R12 T08 S00 FR 36 SD 26	0.08
100-004-310-0	KING DUANE E	OR200	523	R12 T08 S00 FR 36 SD 11	0.38
100-005-170-0	MAYLE CLYDE CURTIS & PAMELA K	D.V 192	366	R12 T08 S00 FR 36 SD 6 S	5.13
100-003-220-1	MAYLE RYAN E	OR233	5646	R12 T8 FR36 SD31	31.639
100-005-470-0	MENDENHALL SHERRY LEE	OR47	78	R12 T08 S00 FR 36 SD 12	3.612
100-005-471-2	MENDENHALL SHERRY LEE	OR47	78	R12 T08 S00 SD 30 FR 36	0.5
100-005-650-0	MINERD BRUCE A	OR210	3314	R12 T08 S00 FR 36 SD 22	0.16
100-005-670-0	MINERD BRUCE A	OR210	3314	R12 T08 S00 FR 36 SD 7	41.8
100-005-660-0	MINERD BRUCE A	OR210	3314	R12 T08 S00 FR 36 SD 23	3.45
100-006-120-0	NEWTON DOW O & IRENE TRUSTEES OF TRUST	OR144	689	R12 T08 S00 FR 36 SD 5	48.12
100-006-270-0	NORRIS PAUL LEROY	OR227	488	R12 T08 S00 FR 36 SD 8	29.84
100-006-280-0	NORRIS PAUL LEROY	OR227	488	R12 T08 S00 FR 36 SD 15	4.5
100-006-510-0	PARSONS MARILYN	D.V 185	69	R12 T08 S00 FR 36 SD 18	0.52
100-005-470-1	RUSH ROBERT L & ASHLEY D	OR223	2509	R12 T08 S00 FR 36 SD 28	0.72
100-005-470-2	RUSH ROBERT L JR & ASHLEY D	OR223	2509	R12 T08 S00 FR 36 SD 29	0.5
100-007-540-0	SEITER RICHARD A & VICKIE BALL-SEITER	OR222	539	R12 T08 S00 FR 36 SD 17	17.918
100-002-490-0	SHIELDS CODY A	OR223	2509	R12 T08 S00 FR 36 SD 4	11.263
100-006-820-0	STARLING BETTY S	OR234	3676	R12 T08 S00 FR 36 SD 19	3.398
100-005-490-0	TRIPLET BERNARD LEE	OR232	4858	R12 T8 S0 FR 36 SD 9	50.069
100-008-990-0	TRIPLET GEORGEANN S	OR191	549	R12 T08 S00 FR 36 SD 27	1.29
100-009-000-0	TRIPLET GEORGEANN S	OR191	549	R12 T08 S00 FR 36 SD 26	0.25



Boundaries	
----- Hidden	----- ROW
----- Hydro	----- Section
----- Roads	----- Lot
----- County	----- Township
----- Parcel	----- Parcels



Disclaimer: The information that these maps contains is for reference purposes only. Please bring any erros to the attention of the Engineer's Office staff.
Thank you